

7.1.1 Release Notes



Asset Point supports global organizations who rely 24x7 on their mission-critical IT infrastructure. From Fortune 1000 companies to SMBs, these firms rely on our solutions to provide transparency and reduce risk when making upgrades or undertaking enterprise change events.

The Asset Point team is pleased to bring you Asset Point Version 7.0 this year as part of a continuous tool enhancement. Based on client usage and feedback, the release features improvements throughout the user interface across all user modules which will enhance the overall app performance. Please see the full feature list of enhancements as follows.



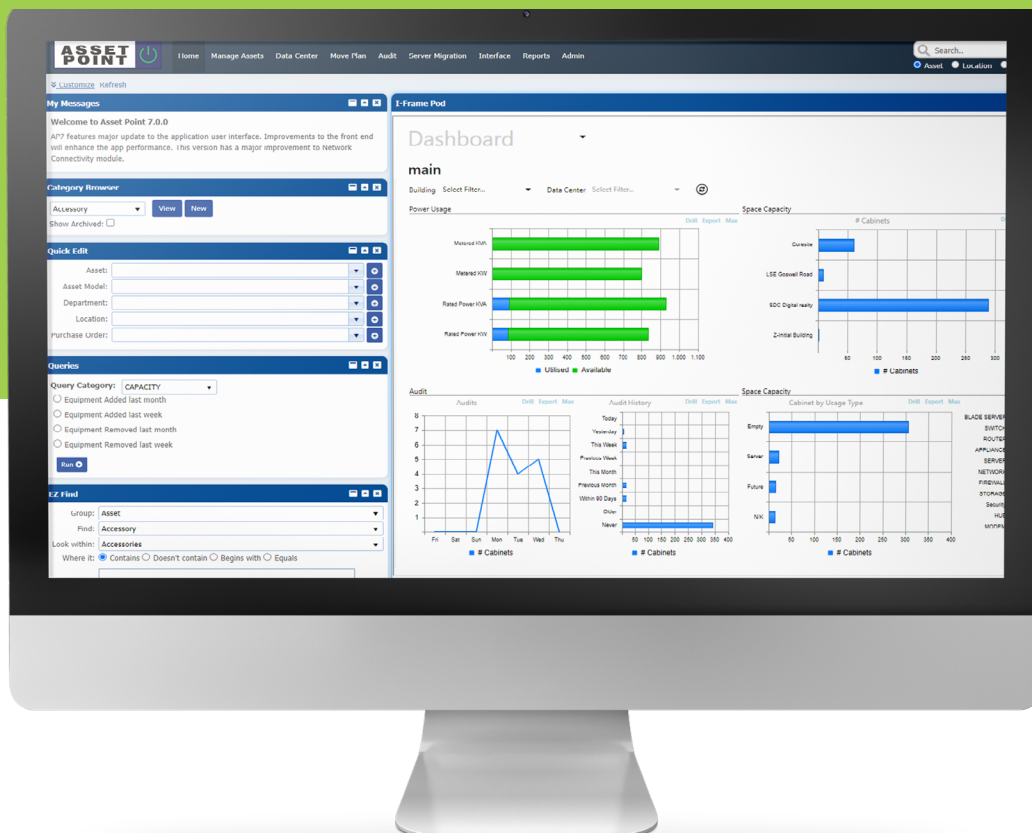
New Asset Point Logo

As part of the new release, Asset Point has updated their primary logo. The new primary logo will also be part of the update website branding and seen throughout the Asset Point tool.

New Asset Point Theme

A key feature of this release is the new Asset Point Theme. Users will now enjoy a modern GUI Style within the Asset Point platform, featuring the updated logo, color scheme, fonts and sizes. The continued use of Pod Customization has been preserved.

The following Homepage screenshot features a glimpse of the Theme Changes:



Menu Bar

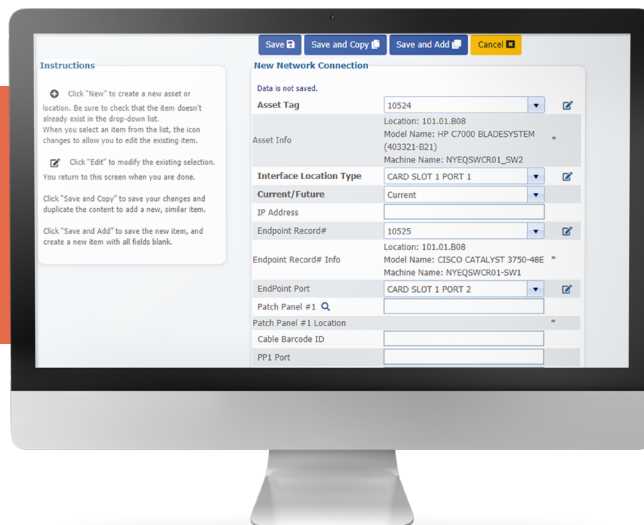
A key feature of this release is the new Asset Point Theme. Users will now enjoy a modern GUI Style within the Asset Point platform, featuring the updated logo, color scheme, fonts and sizes. The continued use of Pod Customization has been preserved.

The following Homepage screenshot features a glimpse of the Theme Changes:



Enhanced Data Entry Form

The data entry form has received several updates as well, including enhancements to the form and buttons to future optimize the user experience. Data entry forms for all entities within the Asset Point platform have been upgraded. These improvements will positively impact in-app performance.



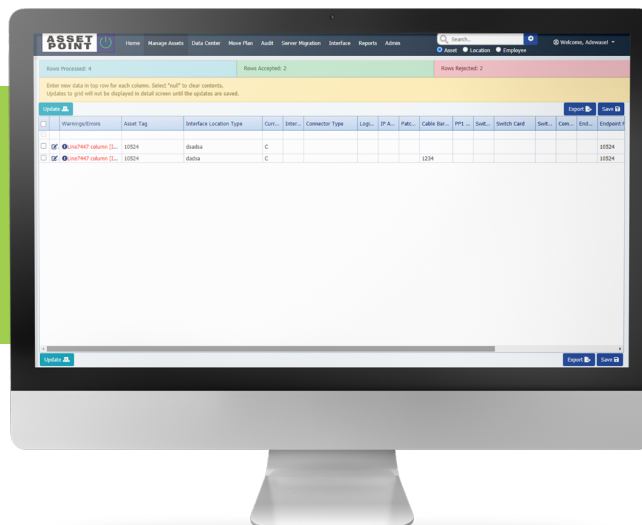
Static/Dynamics Detail pages

In Asset Point Version 7.0, the detail pages for Asset, Cabinet, and other entities have been further streamlined to enhance organization. On the location details page, Asset Point can now process Elevation from the same page through a button at the top right corner, which will update the elevation drawing when clicked. Buttons and pod styling on these pages have also been updated.



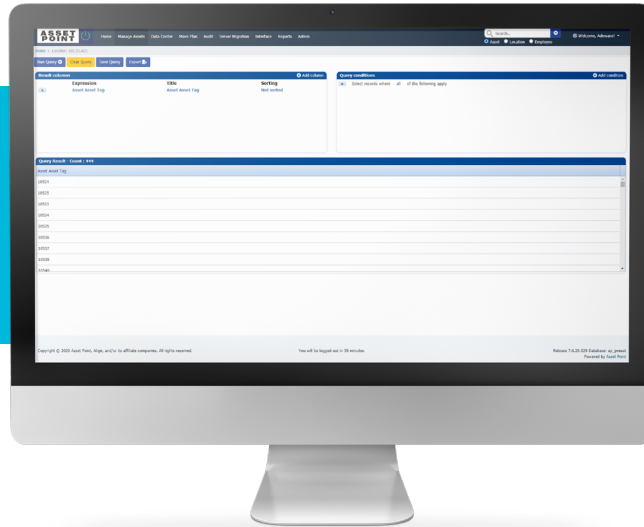
Enhanced Data Export Functionality

As part of the Asset Point 7.0 release, data import functionality has been enhanced. This provides the user with further clarity on the data they are importing directly into the tool. This includes upgraded warnings and success messages which will benefit users during the import process.



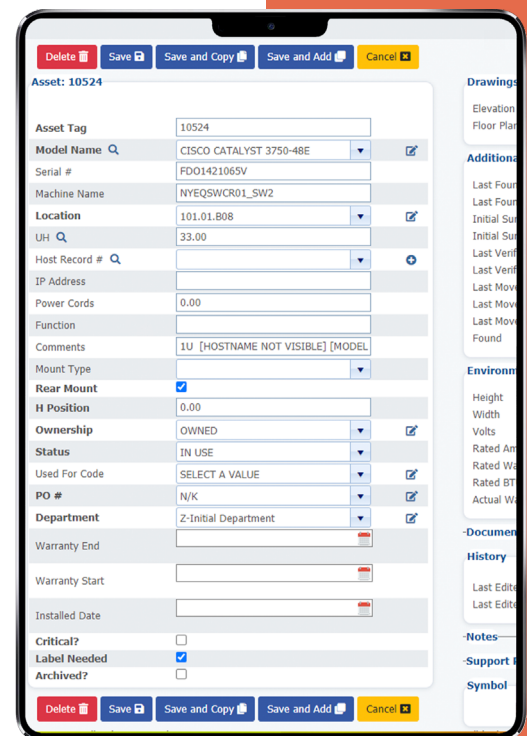
Improved Query Builder

The Query Builder has also seen improved within the Asset Point Version 7.0 Release - there will now be bug fixes based on query condition. Additionally, with an extra layer of permission added to the Query Builder function, Admin users can manage permissions for other users from within the Admin section of the application.



Asset Network Connection

Asset Point Version 7.0 features a major upgrade to Asset Network connectivity. When a user creates an Asset Network Connection from an Asset to an Endpoint Record, Asset Point will now automatically create a reverse connection, enabling users to view Asset Network connection from either end of the connectivity. This functionality upgrade includes the unique Endpoint port. Unlike earlier versions of Asset Point, we will check uniqueness of Asset port as well as Endpoint Asset Port, and the user will be warned if ports are already in use.



Improvements

- ⌚ Azur DevOps Platform for code repository and development lifecycle
- ⌚ Grid framework upgrade for performance enhancement
- ⌚ Grid functionality enhancement like pager and text alignment for better user experience
- ⌚ Progress bar (Page load bar) improvements
- ⌚ New button on cabinet detail page to process elevation
- ⌚ When adding new Asset model, the interface used to redirect to previous page, now user stays on same page so that user can update environmental details
- ⌚ Improved data import functionality that provides better instructions to users.
- ⌚ Added permission to Admin module to show and hide query builder menu item
- ⌚ Removed un-used Application Setting configuration variables
- ⌚ Bulk edit screen update to help text show accurate messages



Bootstrap framework for better performance

We have implemented bootstrap framework for application front end, Asset Ppoint is now more robust across multiple browsers. New framework will enhance the app performance due to fewer call to BACVKEND.



Improved logging mechanism

We have introduced new logging system NLog in this version. This new functionality will help with logging issues and resolving them efficiently.



Improved package creation routine

This release upgraded the package creation process. There are now fewer steps to create an iPad package from Asset Point. This will reduce the time for package creation process.



User account feature

We have introduced new user account section in this release. On the main menu users will be able access their account setting, Advance search, logout, etc.



New Buttons

The upgraded interface has new user-friendly buttons across the application, which has improved the page loading time.

Bugs Fixed

- ⌚ Application Navigation bug fixes
- ⌚ While fixing rejected record (iPad/excel import) the empty fields add '&dxcx' like text by default
- ⌚ Asset Mode Edit screen - Edit Mode scales pod edits icon styling issue showing edit text on top of the icon
- ⌚ IFrame Dashboard issue not displaying dashboard in Iframe
- ⌚ Selecting rows hide first column due to dark color
- ⌚ Query Builder After saving result file, file extension repeats xls.xls.